






Campus Champion Fellow Large Scale Video Analytics (LSVA)

Dirk Colbry
Michigan State University



 <http://wiki.hpcc.msu.edu/x/IIDr> 



Me (Dirk Colbry)



- Campus Champion since 2010, Michigan State University
- Training and consulting services to assist MSU researchers in effectively utilizing local and national resources
- Image analysis background; currently developing methods and tools to assist in analyzing image/video data
- Campus Champion Fellow, 2012-13
- Campus Champion Support Staff, since January 2013

 <http://wiki.hpcc.msu.edu/x/IIDr> 

Campus Champion Fellows Program

- Paired with an ECSS team and project
- Pays for time and travel expenses
- Learn more about ECSS and XSEDE
- Gain in depth experience with a project and team outside my typical research
- Interesting people and projects!

Unanswered Questions

- Will the 20% time be conducted at work or outside of work?
- How will I get paid?
- What type of credit do I get?
- What would I need to learn?
- Could I work on a project with team members at Michigan State University?
- Could I work on a project related to my own interests and research?

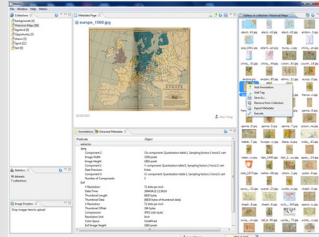
Fellows Timeline

- Applied for Fellows program
- Picked a set of projects
 - <https://www.xse.de.org/ccfellows-projects>
- Selections Announced
- Met team at XSEDE'11
- Lots of email and phone meetings
- Initial (get your feet wet) project
- Lots of project refinement

LSVA Team

- PI: Virginia Kuhn (University of Sothern California)
- Primary ECSS Project contact: Ritu Arora (TACC)
- ECSS Project contact: Kai Lin (SDSC)
- Co PIs:
 - Alan Craig (NCSA)
 - Kevin Franklin (NCSA)
 - Michael Simeone (NCSA)
- ECSS Consultants at NCSA:
 - Luigi Marini
 - David Bock
 - Liana Diesendruck
- Others...

Large Scale Video Analytics (LSVA)



The team would like to enable interactive, real-time queries of analytics stored in an on-demand multimedia DB2 database

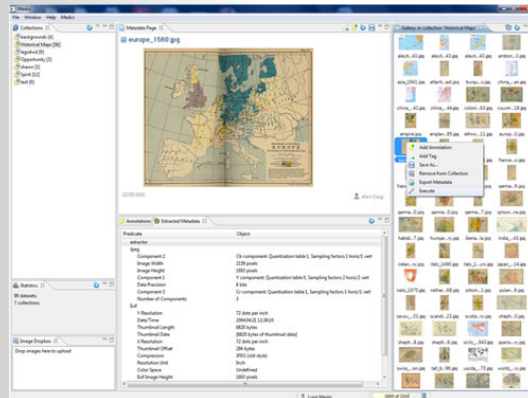


<http://wiki.hpcc.msu.edu/x/IIDr>



Installing Medici

Medici is a content management system that allows users to upload, collate, annotate, and run analytics on a variety of file types



<http://medici.ncsa.illinois.edu/>



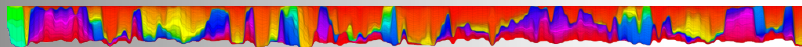
<http://wiki.hpcc.msu.edu/x/IIDr>



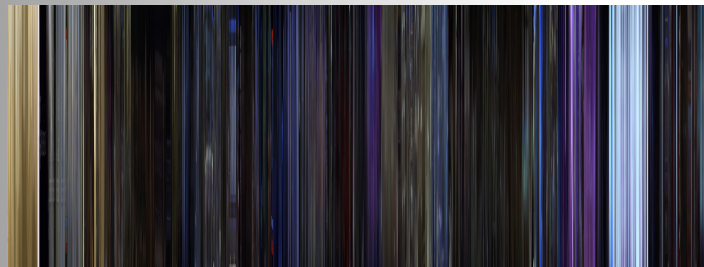
Literature / Software Review

- Searched the literature for color video analytics techniques
- Focused on available software
- Tried to find things that could be run on Gordon and integrated into Medici

Video Bar Codes

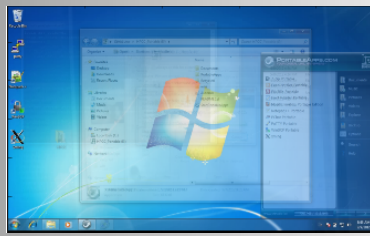
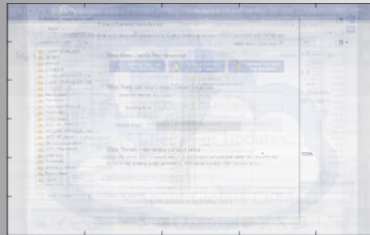


http://www.garethwilliamsportfolio.com/?page_id=55

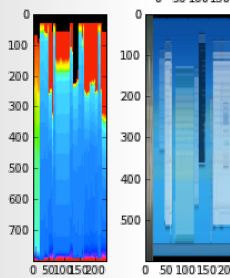
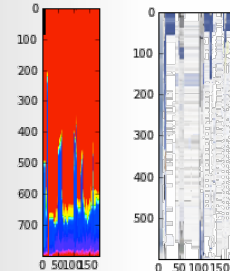


<http://moviebarcode.tumblr.com/>

Creating video bar codes



<http://wiki.hpcc.msu.edu/x/X5Xh>



MICHIGAN STATE
UNIVERSITY

<http://wiki.hpcc.msu.edu/x/IIDr>



Next Step

- How do we integrate new software into Medici on Gordon?
- My goal is to documenting the process so future researchers have a strong foundation from which to start

MICHIGAN STATE
UNIVERSITY

<http://wiki.hpcc.msu.edu/x/IIDr>





QUESTIONS?

MICHIGAN STATE
UNIVERSITY

<http://wiki.hpcc.msu.edu/x/II Dr>

